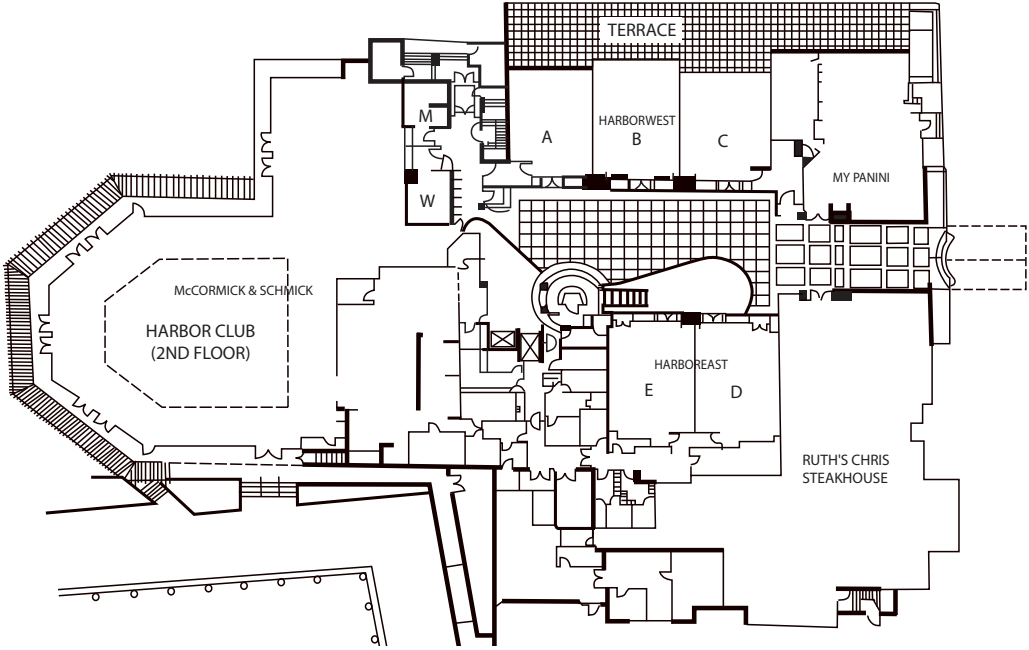
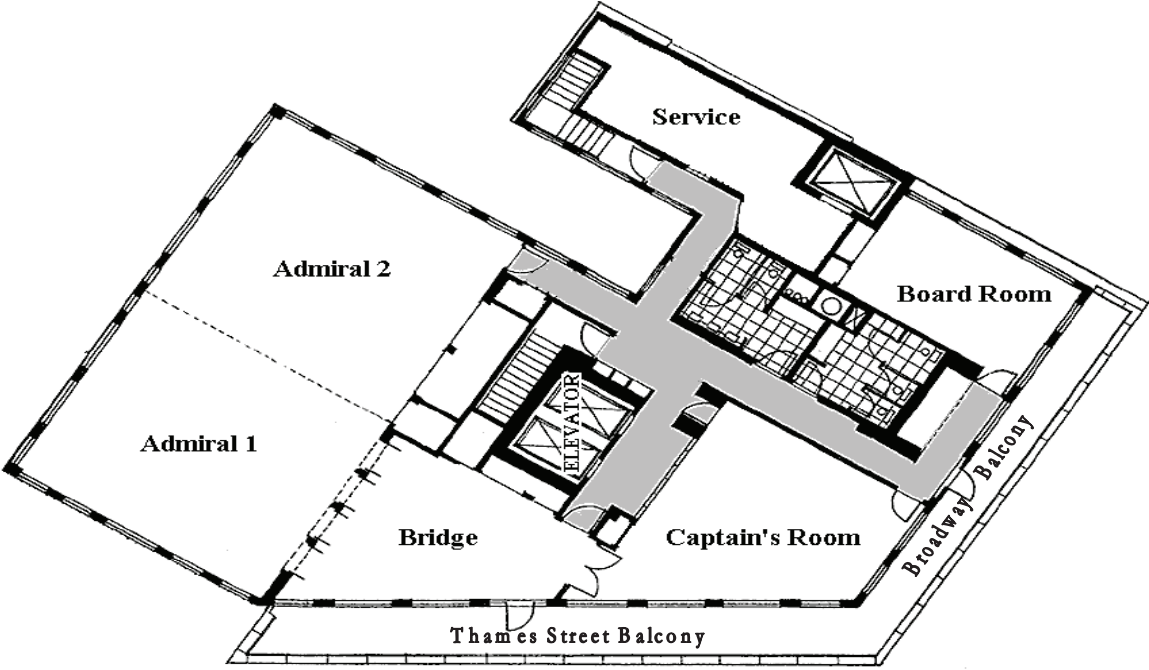


# Floor Plans & Capacity Charts

Pier 5 Hotel



Admiral Fell Inn



# Floor Plans & Capacity Charts

PIER 5 CAPACITY CHART

Pier 5 Hotel Ballroom	Square Footage	Dimensions	Classroom Style	U-Shape	Conference Style	Theatre Style	Rounds	Rounds with Dance Floor	Stand-Up Reception
<i>Harbor West</i>	2880	81x34	160	-	-	300	210	170	300
<i>A</i>	952	28x34	45	25	25	90	60	-	95
<i>B</i>	1050	25x42	50	30	30	100	80	-	100
<i>C</i>	952	28x34	45	25	25	90	60	-	95
<i>Harbor East</i>	2363	40x52	120	40	45	230	160	120	250
<i>D</i>	1181	26x40	55	20	25	100	70	-	150
<i>E</i>	1181	26x40	55	20	25	100	70	-	150
<i>Harbor Club</i>	1910	45'x55'	120	45	45	250	200	150	275

\*Ceiling height for all rooms is 15 feet @ Pier 5 Hotel

\*Please note, this is total capacity & does not consider staging, risers, or audio visual

Admiral Fell Inn Capacity Chart

FUNCTION ROOM	SIZE	HT	SQUARE FEET	THEATER STYLE	CLASSROOM STYLE	CONFERENCE STYLE	TABLES 8/10	RECEPTION
<b>MEETING ROOMS</b>								
ADMIRAL'S ROOM	52'x30'	9	1,560	156	96	52	96 / 120	180
ADMIRAL 1	26'x30'	9	780	66	36	36	48 / 60	90
ADMIRAL 2	26'x30'	9	780	66	36	30	48 / 60	90
CAPTAIN'S ROOM	24'3"x22'	9	540	34	24	20	32 / 40	50
BOARD ROOM	22'x13'6"	9	300	-	-	12	10 / 14	12
BRIDGE	23'7"x16'	9	380	-	-	18	24 / 30	40
BALCONIES	16'x33'		520	-	-	-	-	65
TOTAL 5TH FLOOR		9	2,480	-	-	-	120 / 150	250
THE STONE PARLOR	17'x22'+	8	438	50	20	20	40	60
THE STONE ROOM	33'x23'	8	759	60	30	30	60	80
ADMIRAL'S LOUNGE	15'x17'	8	255	-	-	-	-	40
WINE CELLAR						16		

BROOKSHIRE SUITES CAPACITY CHARTS

Brookshire Suites	Square Footage	Dimension	Classroom Style	U-shape	Conference	Theatre	Rounds	Rounds with Dance Floor	Stand-Up Reception
<i>Sky Room</i>	750	25X30	40	35	25	75	60	40-	75
<i>Cloud Club</i>	1200	30x40	-	-	-	-	-	--	125

\*Ceiling height for both rooms is 12 feet.

\*Please note, this is total capacity & does not consider staging, risers, or audio visual